

# TM-S1000 Utility

---

# Operation Manual

---

## **Cautions**

- No part of this document may be reproduced, stored in a retrieval system, or transmitted in any form or by any means, electronic, mechanical, photocopying, recording, or otherwise, without the prior written permission of Seiko Epson Corporation.
- The contents of this document are subject to change without notice. Please contact us for the latest information.
- While every precaution has taken in the preparation of this document, Seiko Epson Corporation assumes no responsibility for errors or omissions.
- Neither is any liability assumed for damages resulting from the use of the information contained herein.
- Neither Seiko Epson Corporation nor its affiliates shall be liable to the purchaser of this product or third parties for damages, losses, costs, or expenses incurred by the purchaser or third parties as a result of: accident, misuse, or abuse of this product or unauthorized modifications, repairs, or alterations to this product, or (excluding the U.S.) failure to strictly comply with Seiko Epson Corporation's operating and maintenance instructions.
- Seiko Epson Corporation shall not be liable against any damages or problems arising from the use of any options or any consumable products other than those designated as Original EPSON Products or EPSON Approved Products by Seiko Epson Corporation.

## **Trademarks**

EPSON is a registered trademark of Seiko Epson Corporation in Japan and other countries/regions.

Copyright © 2008-2013 Seiko Epson Corporation. All rights reserved.

---

## Features

With the TM-S1000 Utility, you can check settings and operation of the TM-S1000. The utility has the following functions:

- Obtains/displays settings of the TM-S1000.
- Displays an error cause and troubleshooting when obtaining settings fails.
- Checks operations of the scanner, MICR, franker, pocket sorting, and buzzer.
- Performs cleaning of the MICR unit.

## Operation Environment

---

### OS

- Microsoft Windows 8 (32/64 bit)
- Microsoft Windows 7 SP1 (32/64 bit)
- Microsoft Windows Vista SP2 (32/64 bit)
- Microsoft Windows XP SP3 (32 bit)
- Microsoft Windows 2000 SP4
- Microsoft Windows Server 2012
- Microsoft Windows Server 2008 R2 SP1
- Microsoft Windows Server 2008 SP2 (32/64 bit)

---

### PC

IBM PC/AT compatible machine using an OS described above.

---

### Connect Interface

USB (full-speed/high-speed) standard

## How to Use

### NOTE

Before using the utility, be sure to connect the scanner to the host computer and connect the AC adapter, referring to the TM-S1000 User's Manual.

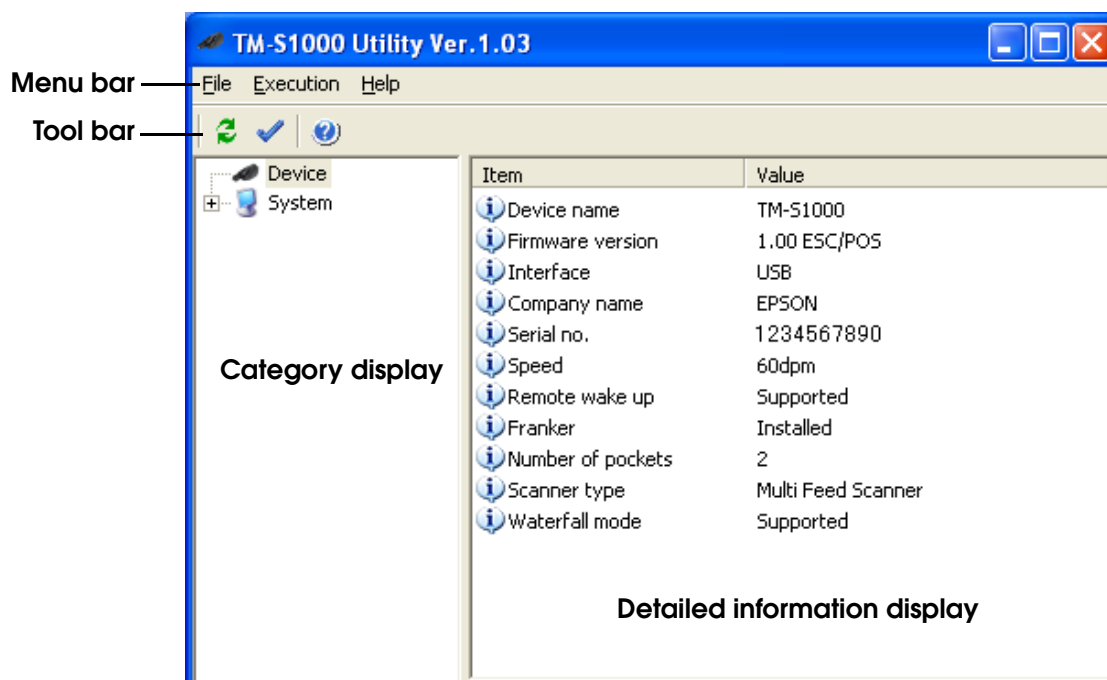
## Start Up

- 1 Turn on the power of the scanner.
- 2 Load the "Utility & Documents CD" attached to the product on the PC.  
The start-up screen automatically appears.
- 3 Click the button on the screen for the TM-S1000 Utility.  
The utility starts.




### NOTE

- If the start-up screen does not appear, double-click on "EPSETUP.EXE" on the CD.
- When the utility starts for the first time, the USB device driver is automatically installed.  
However, the utility itself will not be installed.


## Utility Screen



## Menu Bar and Tool Bar

Menu	Sub Menu	Icon	Description
File	Exit	—	Ends the utility.
Execution	Get Information		Obtains and displays information about the TM-S1000. Displays an error cause and troubleshooting with a message when an error occurs.
	Scanner Test		Checks operations of the TM-S1000.
Help	About...		Displays the version information.

## Obtaining/Displaying Setting Values of the TM-S1000

- 1 Select the **Get Information** menu or click  on the tool bar.
- 2 After the progress bar appears, information about the TM-S1000 is obtained and displayed.
- 3 Select each category on the category display to confirm information for that category.  
For items that cannot be obtained, “none” is displayed for the **Value**.

## Operation Check of the TM-S1000/MICR Cleaning

### Preparation

For operation check

- More than one check or document

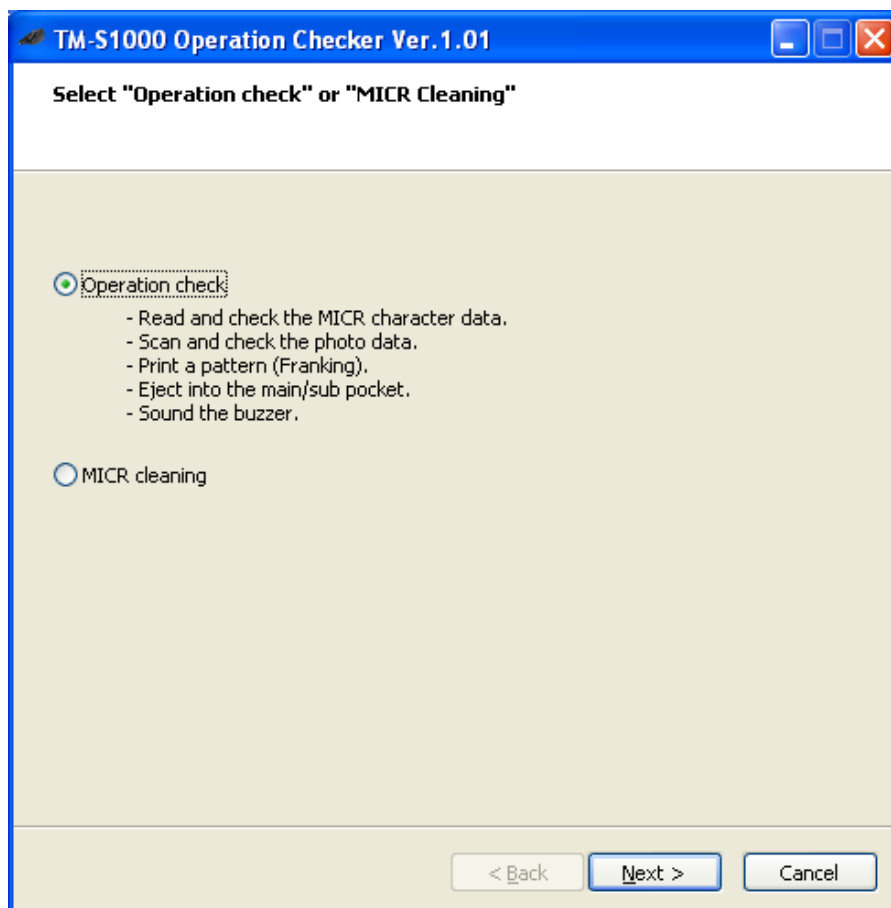
For MICR cleaning

- Cleaning card

**NOTE**

For information on the available check, document, or cleaning card, see the TM-S1000 User's Manual.

- 1 Select the **Scanner Test** menu or click  on the tool bar.  
The following screen appears.



- 2 Load the paper in the ASF/SF, select **Operation check** or **MICR cleaning**, and click **Next**.
- 3 Follow the instruction displayed on the screen.

**NOTE**

- Scanned images are shown in grayscale.
- Franking can be skipped.